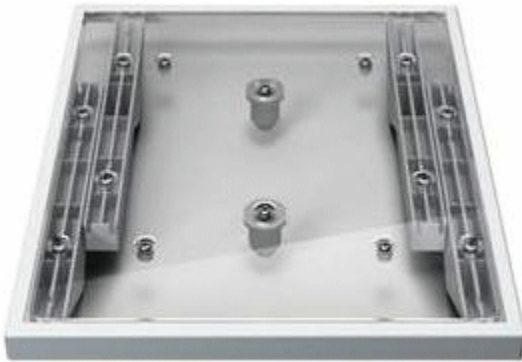


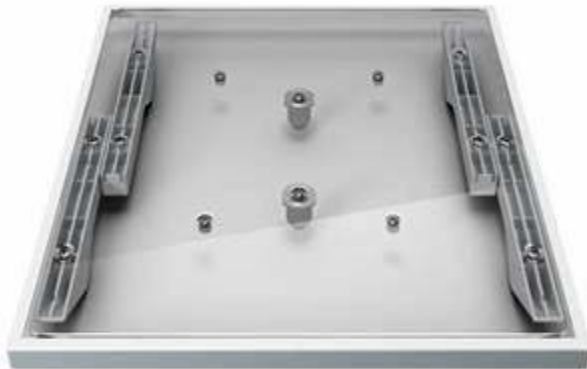


**FOR THE EPSON® SURECOLOR®
F2000 SERIES DIRECT-TO-
GARMENT PRINTER**

Epson Platens: Quick-change. Interchangeable. "Pop-off" in seconds to switch platen sizes. Plus, the adjustable platen height feature allows you to accommodate different garment thicknesses with ease.



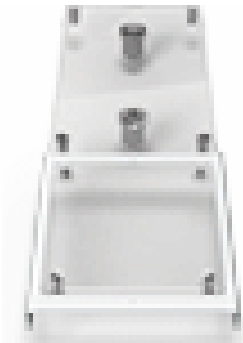
Small Garment Platen: 10" x 12"



Medium Garment Platen: 14" x 16":
***Comes "standard" with purchase of the
Epson® printer. Can also be bought as
a replacement, or extra, platen.***



Large Garment Platen: 16" x 20"



Sleeve Garment Platen: 4" x 4" For imaging on garment sleeves.



Lawson Floor Stand: Custom-designed and made by Lawson to fit the Epson® SureColor® F2000 Direct-to-Garment Printer. Four floor casters provide mobility for the stand and printer and also can be locked-in-place when desired. Two platen hoop hanger mounts securely hold and organize your items. Open the stand's hinged door and gain entry to the interior, extra storage shelf.



YOU MAY ALSO BE INTERESTED IN...

Digital Factory Apparel Epson® Edition – RIP Software by CADlink Technology Corporation. Maximize Epson® print and ink technologies with RIP software specifically configured to use with the Epson® SureColor® F2000 Series Direct-to-Garment Printer.

Here's just a small sampling of what you'll get with this software:

- ◆ *Seamless interface with design applications.*
- ◆ *Complete, centralized job management and scheduling tools.*
- ◆ *Spectacular color reproduction; pre-production and production tools.*
- ◆ *T-shirt/apparel specific features.*
- ◆ *Add-on modules: FluidMask for Digital Factory///ICC Profiling///DeviceLink.*